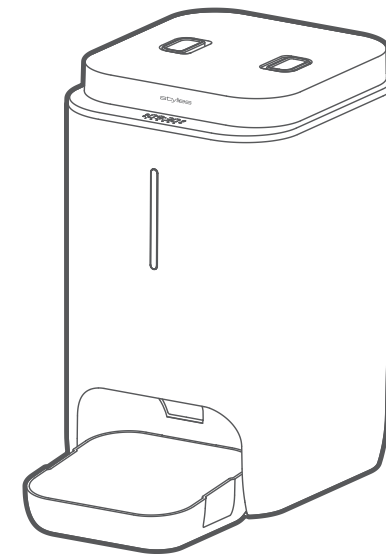


stylies®

CIBUS

Smart Pet Feeder

寵物智能餵食器



嘉儀企業

成立於1968年·每個細節都用心·每個環節都關心

諮詢專線:台北(02)2509-7718

台中(04)2381-8388

新竹(03)553-4998

高雄(07)550-5398

網址: <https://ke.kenk.com.tw>



0807202588

嘉儀企業 代理產品系列

德國Fissler菲仕樂精品鍋具

德國LIEBHERR利勃冰箱

德國Miele精品家電

德國嘉儀HELLER家電

義大利ARISTON阿里斯頓家電

義大利BERTAZZONI博塔隆尼廚電

丹麥BODUM生活美學用具

美國Whirlpool惠而浦家電

日本BRUNO美好生活

韓國NOVITA諾維達智能便座

台灣HOBOT清潔機器人

台灣KE家電

Coplax AG

Tramweg 35, 6414 Oberarth, Switzerland

Tel. + 41 41 766 83 30

Fax + 41 41 766 83 31

info@coplax.ch

www.stylies.com



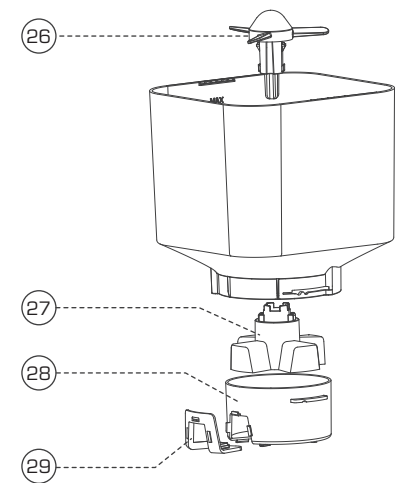
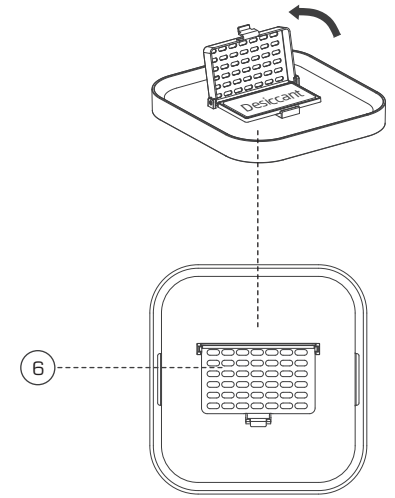
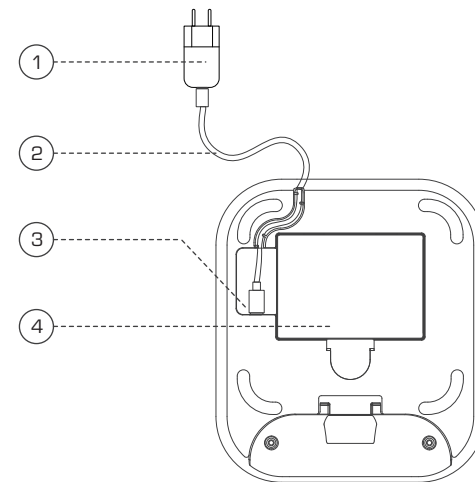
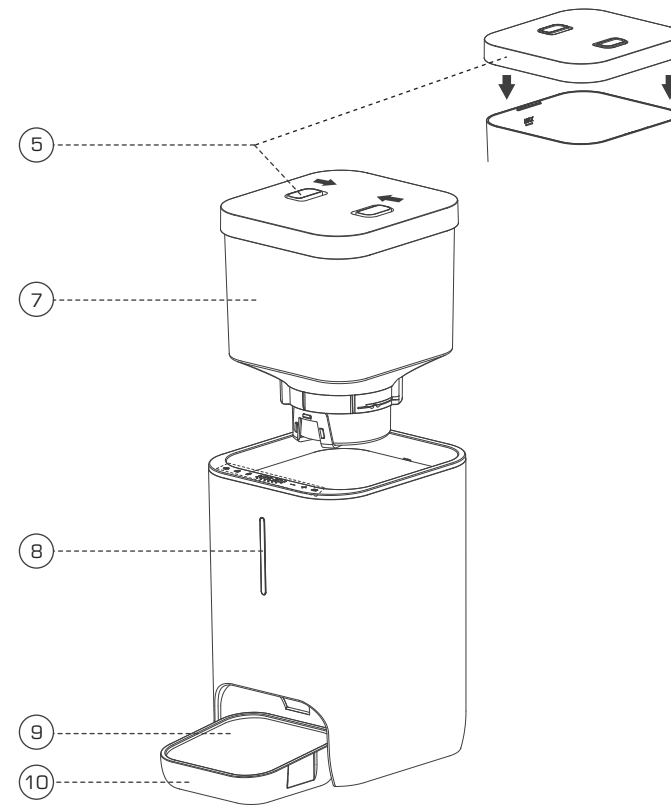
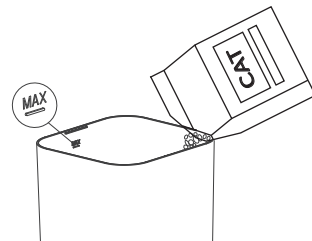
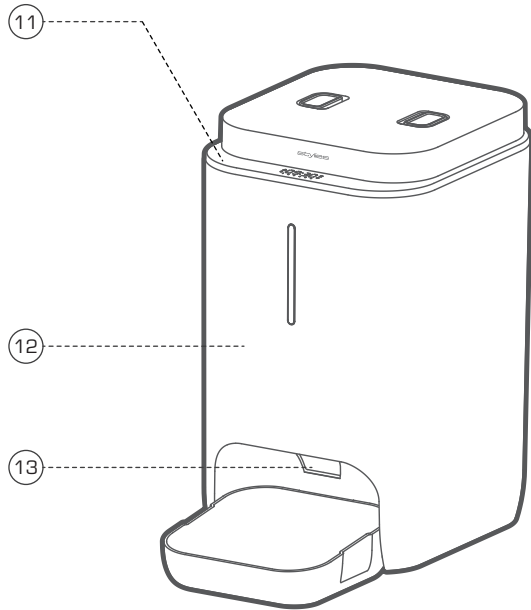
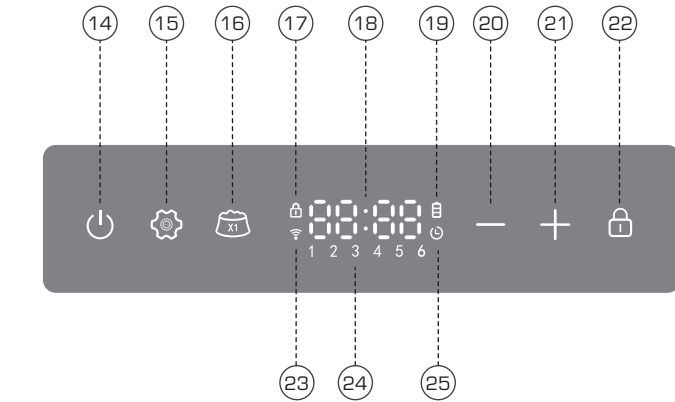
Smart Life - Smart Living



Instruction Manual_English...02-07

使用說明書_繁體中文.....08-13

CIBUS - Smart Pet Feeder



English

Congratulations! You have just acquired the exceptional pet feeder Styliés Cibus. It will give you great pleasure.

As with all domestic electrical appliances, particular care is needed with this model also, in order to avoid injury, fire damage or damage to the appliance. Please study these operating instructions carefully before using the appliance for the first time and follow the safety advice on the appliance itself.

IMPORTANT SAFETY GUIDELINES

- Please read through the operating instructions carefully before you use the appliance for the first time and keep them safely for later reference; if necessary pass them on to the next owner.
- Coplax AG refuses all liability for loss or damage which arises as a result of failure to follow these operating instructions.
- The appliance is only to be used in the home for the purposes described in these instructions. Unauthorised use and technical modifications to the appliance can lead to danger to life and health.
- This appliance can be used by children aged from 8 years and above and persons with reduced physical, sensory or mental capabilities or lack of experience and knowledge if they have been given supervision or instruction concerning use of the appliance in a safe way and understand the hazards involved. Children shall not play with the appliance. Cleaning and user maintenance shall not be made by children without supervision.
- The company reserves the right of final interpretation for any modifications without prior notice.
- Use this product selectively based on your pet's actual situation.
- This product operates at low voltage, but pets biting the power cord may cause electrical leakage. Please use under proper guidance.
- Please properly dispose of all packaging materials. Some items are packaged in plastic bags, which may cause suffocation. Keep them away from children and pets.
- Do not allow children to play in or near the pet feeder.
- Do not use the feeder if pets cannot reach the food bowl or have any physical disabilities.
- Do not rinse or soak the main unit and food hopper lid. Please wipe clean with a damp cloth.
- Do not put the product in a dishwasher for cleaning, except for the stainless steel food bowl and the food hopper.
- Do not use hot water when cleaning the food hopper and food bowl. If not using, moving this product, or cleaning the product for extended periods, please unplug the power cord.
- This product should only be placed in dry locations. Do not place the device outdoors or on wet surfaces, and do not allow the product to contact or be submerged in water.
- This product should only be placed in dry locations. Do not place the device outdoors or on wet surfaces, and do not allow the product to contact or be submerged in water.
- Do not place the product in environments exposed to rain or snow.
- Do not touch the device power supply with wet hands.
- Do not use damaged power cords or plugs.
- Keep the product away from fire sources, heat sources, or other high temperature surfaces.
- Do not disassemble, modify, or repair this product yourself, otherwise you will lose all warranty and service rights.
- Do not place any foreign objects in the pet feeder.
- Do not use wet, canned, or damp food.
- To avoid tripping pedestrians, ensure the power cord is positioned away from walkways.

 Note: This product is not waterproof.

Description of the appliance

The appliance consists of the following main components:

- | | |
|---|--|
| 1. Power adapter | 16. Manual feeding setting |
| 2. Power Cable_Type-C power connection | 17. Child lock release sign |
| 3. Power Port Charging / power input | 18. Feeding portion display (Clock display) |
| 4. Battery Compartment 3xSize D battery storage | 19. Emergency battery power supply sign |
| 5. Food Hopper Lid and opening method | 20. Decrease(-) button |
| 6. Desiccant /Moisture control | 21. Increase (+) button |
| 7. Food Hopper Main container | 22. Child lock release button |
| 8. Status Display Light | 23. WiFi Connection sign |
| 9. Food Bowl (Stainless steel feeding bowl) | 24. Number of scheduled meals |
| 10. Food Tray (Base platform for food bowl) | 25. Time Setting sign |
| 11. Control panel and display interface | 26. Impeller device(Food dispensing mechanism) |
| 12. Main Unit Electronic control system | 27. Food delivery wheel |
| 13. Food dispensing Outlet | 28. Impeller Cover Silicone(Sealing component) |
| 14. On/off button | 29. Dispensing Impeller(Food delivery wheel) |
| 15. Settings button | |

Power Supply Methods

1. AC Power Operation

Insert the Type-C end of the power cable into the port at the bottom of the feeder, then plug the 5V power adapter into a power outlet. The machine beeper sounds once, indicating power is connected.

2. Battery Power Operation

Open the battery cover at the bottom of the feeder, install 3 Size D batteries (user-supplied), ensuring battery polarity matches the markings in the battery compartment. To avoid sudden power loss affecting pet feeding, do not use battery mode as the sole power source - this mode should only be used for emergency feeding. If the machine will not be used for an extended period, remove the batteries.

BATTERY-ONLY MODE DOES NOT SUPPORT REMOTE FEEDER OPERATION.


Batteries can be installed as backup when using AC power - the device will automatically switch during power outages and continue normal operation.

In battery mode, low food detection and food jam detection only work during dispensing cycles, not at other times. Please address any abnormal alarms promptly during this process.

Instructions for Use

For initial use or daily use, please follow these steps:

1. Press and hold the lid release tab with thumb and index finger, lift the food hopper lid;
2. Open the desiccant box lid, place desiccant inside, close desiccant box lid (Recommended to replace the desiccant every two months.)
3. Add pet food, taking care not to exceed the MAX line. Pet food pellets should not exceed 15mm (approximately 0.6 inch). Do not add wet food.
4. Press and hold the release tab with thumb and index finger, attach lid to the food hopper.
5. Combine the stainless steel food bowl and food tray together, then install them in the slot beneath the feeder.

 Note: Before moving the feeder, remove the food tray from the slot. When lifting the feeder, hold the main unit bottom rather than any other parts to prevent dropping.

APP OperationGuide

1. Download and Install"Smart Life"App

Download and install the"Smart Life" App. Refer to the icon shown below, or scan the QR code to download.

2. WiFi Pairing Setup

Press and hold the control panel settings button for 3 seconds until you hear a long "beep" sound. The WiFi light on the panel will flash, indicating the device is in pairing mode.



3. Add Device in App

Open the APP, click the "+" in the upper right corner, then click "Add Device". Turn on your phone's WiFi and Bluetooth functions. Search for the device and follow the prompts to bind the device.

4. Set Feeding Schedule

After successful binding, you can set feeding schedules in the APP interface.

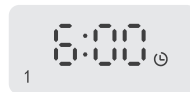
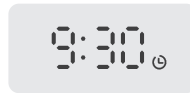
▲ Important Notes:

1. After first connection, allow approximately 3 minutes for the control panel's current time to update.
2. Users can set feeding schedules in the APP and control the panel. The feeder will dispense food according to the set schedule automatically every day, and you can receive push notifications and timely status updates.
3. Battery-only power mode does not support remote feeder operation.
4. To reset network connection, press and hold the settings button for 3 seconds to enter pairing mode.

Button OperationGuide

1.Set Current Time:

Press and hold the child lock button for 3 seconds to unlock other buttons and screen.Press the settings button, the current time "hour" position flashes, indicating you can modify the current time "hour" using the "+" and "-" buttons. Press the settings button to confirm, then modify the current time "minutes" using the "+" and "-" buttons. After confirmation, press the settings button to confirm the current time and proceed to set the first meal dispensing time.



2.Set Feeding Time and Portions:

After setting the current time,proceed to the first meal feeding time. The "hour" position flashes, indicating you can modify the first meal feeding time "hour" using the "+" and "-" buttons. After confirmation, press the settings button to modify the first meal feeding time "minutes" using the "+" and "-" buttons. After confirmation,press the settings button to save and proceed to the first meal portion setting, displaying "P-01".Use the "+" and "-" buttons to select feeding portions. After confirmation, press the settings button to save and proceed to setting the second meal feeding time, and so on. The control panel supports up to 6 meals per day.

▲ Notes:

- 1) Set feeding schedules will display in "meal count digits" - if 3 meals are set,the display shows"123".
- 2) Default feeding times for the first four meals are 6:00, 12:00,18:00, 00:00 with default portions of 1 serving each. The fifth and sixth meals default to 01:00 with 0 portions.
- 3) If you do not intend to feed at the system's default scheduled time, you may set the portion -size to 0, the device will not dispense food at that time, and the corresponding meal number will not be displayed.

3.Manual Feeding:

In unlocked state, press the manual feed button once, and the feeder will dispense 1 portion of food.

Maximum 25 portions can be manually fed. Monitor your pet's eating to prevent excessive food causing food outlet blockage alarms.

4. Clear All Feeding Schedules:

In unlocked state, press and hold the "-" button for 3 seconds. The machine sounds a long beep,resetting all feeding schedules to default feeding schedule.

5. Adjust Status Display Light Brightness:

In unlocked state, press and hold the "+" button for 3 seconds. The machine sounds a long beep, statusdisplay light dims. Press and holdthe "+"button for 3 seconds again to restore original brightness.

6.Reset WiFi Network:

In unlocked state,press and hold the "Settings" button for 3 seconds.The machine sounds a long beep, WiFi connection light starts flashing, indicating WiFi pairing mode.



Status Light Description

1. Blue Light Solid: Dispensing food
2. Red Light Solid: Low food level - machine continues scheduled feeding,please add food promptly.
3. Red Light Slow Flash: Food outlet blocked - machine stops working, clear food from outlet to continue dispensing.
4. Red Light Fast Flash: Impeller jammed - machine stops working, disconnect power, lift food hopper to check internal impeller jam, clear and reinstall food hopper, then reconnect power to start.

▲ Notes: When powered by dry batteries, the detection sensor operates only during the dispensing process. If an abnormal indicator light appears,it will remain on for about 2 minutes after dispensing and then automatically turn o° to conserve battery power.

TroubleshootingTable

Problem	Solution
Status Display Light Red Solid	1) Low food level,please add food.Machine can still dispense normally. 2) If machine has sufcient food but red light remains solid, check if placement is indirect sunlight, which affects machine detection stability. Place machine in shaded location.
The low food red light is not staying on	Clean the food hopper and ensure it is dry and free of grease.
Status Display Light Red Flashwith Beeping	1) Food outlet blocked,clear food from outlet, ensure no food remains in outlet passage. After cleaning, remaining undelivered portions will be dispensed. 2) Check if meal portions are excessive
Status Display Light Red Fast Flash with Beeping	Food hopper jammed internally,disconnect power, follow food hopper disassembly instructions to clean and reinstall, then reconnect power.
Machine Not Dispensing	1) Ensure food hopper contains dry foodwith pellet diameter between 2-15mm / approximately 0.07-0.6 inch. 2) For first use, since impeller chamber is not filled with food, manually feed 5-6 portions then observe normal dispensing. 3) If machine uses battery power, check battery level is sufcient. Try connecting AC power for troubleshooting. 4) If machine uses AC power, check if power adapter is original.
Machine Dispensing Time Deviation	1) Confirm feeding schedule is set correctly. 2) Machine may have approximately 2 minute cumulative time error, which is normal.
Machine Inaccurate Dispensing	1) Di°erent food pellet sizes cause dispensing quantity variations. 2) For first use, since impeller chamber is not filled with food, manually feed 5-6 portions then observe dispensing accuracy.

Battery Light Flashing	Low battery level, please replace batteries.
Unable to Connect WiFi	1) Ensure machine has external power connected and is turned on. 2) Ensure WiFi lights flashing. 3) Confirm WiFi supports 2.4GHz frequency. 4) Ensure machine is not too far from router with sufficient signal strength.
WiFi Light Flashing	Machine is in pairing mode, keep mobile device in pairing state.
All indicator Lights On	1) Check if power is normal. 2) Check if charging cable is properly inserted in corresponding port. 3) Check if machine is turned on, press "Power" button.

Cleaning & Maintenance

For your pet's health, regular cleaning of the feeder is recommended. Before cleaning, empty food from the food bowl and hopper.

For oily pet food, it is recommended to clean the food hopper once after each full hopper is consumed.

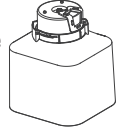
For non-oily pet food, clean the food hopper once every 2-3 hoppers. This ensures proper hygiene for your pet's meals.

Cleaning Methods:

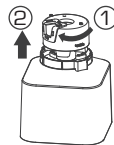
1. Food Hopper Lid / Main Unit: Only wipe product surface clean, do not rinse with water.
2. Food Hopper & Food Bowl & Tray: Can be rinsed or soaked for cleaning. After washing, thoroughly air dry before reinstalling on machine.

Food Hopper Disassembly Steps:

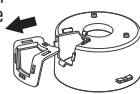
1. Open food hopper lid, remove food hopper separately, invert



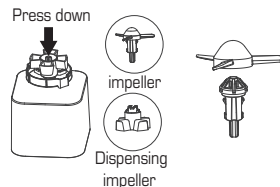
2. Rotate clockwise and lift to remove impeller cover



3. Remove impeller cover silicone



4. Press impeller spring shaft firmly to bottom, listen for "click" sound, then impeller and dispensing impeller will separate. Remove impeller and dispensing impeller. Pull out silicone head from top of impeller, remove.



5. Obtain food hopper, impeller cover, impeller cover silicone, dispensing impeller, impeller silicone head, impeller plastic bracket - all can be washed with water. (Stainless steel food bowl and food tray can also be washed with water).

REPAIRS / DISPOSAL

- Repairs to all electric devices (including replacement of the power cable) may only be performed by authorised experts. Carrying out inappropriate repairs voids the warranty and no liability shall be accepted.
- If the power cable has become damaged, it must be replaced by the manufacturer, an official service partner or a qualified person in order for further damage to be avoided.
- Never operate the device if the cable or the plug is damaged, if the device has malfunctioned or if the device has been dropped or damaged in any other way (i.e. with cracks or breakages to the casing).
- Do not use any sharp, abrasive objects or corrosive chemicals.
- Any old devices must be immediately rendered unusable (unplug power cable) and taken to the appropriate waste collection point.
- This device must not be disposed of with household refuse. Please dispose of this device at the appropriate waste collection centre. Collecting and recycling electrical and electronic waste saves valuable resources.
- The packaging material is recyclable. Dispose of the packaging in an environmentally friendly way and ensure that it is taken to a collection centre for recyclable materials.

- If electrical devices are disposed of in an unregulated way, the effects of weathering can cause hazardous substances to contaminate the groundwater and the food chain or can result in a burden on flora and fauna for years to come.



TWO-YEAR WARRANTY

For the warranty period of 2 years after the purchase of the appliance, we will repair or replace with a refurbished product (at our option), without any cost to you for either the parts or labor, any machine or part that proves to be defective in materials or workmanship. EXCEPT FOR THE WARRANTY PROVIDED ABOVE, Coplax DISCLAIMS ANY AND ALL OTHER IMPLIED WARRANTIES AND ANY WARRANTY OF MERCHANTABILITY OR FITNESS FOR A PARTICULAR PURPOSE WITH RESPECT TO THE PRODUCT FOR ANY PERIOD AFTER THE EXPIRATION. Coplax will, at its sole discretion, repair or exchange a product under warranty. NO credit will be issued. The remedies described above are your sole remedies in the event of any breach of the warranty provided above.

Who is covered:

The original owner of a privately-owned Styliet appliance who can provide a dated proof of purchase in the form of an invoice or receipt is covered. The warranty is not transferable. The original dated proof of purchase (a copy needs to be faxed, emailed, mailed) prior to returning the unit. Provide the model number of your appliance and a detailed description (preferably typed) of the problem with the item. Enclose your description in an envelope and tape it directly to the appliance before the box is sealed. Do not write anything on or alter in any way the original box.

What this warranty does not cover:

Parts that normally require replacement, such as Desiccant Moisture absorbent, water wick filters and any other consumable item that needs regular replacement except for material or workmanship defects.

- Damage, failure, loss or deterioration due to ordinary wear and tear from abuse, misuse, negligence, accident, faulty installation, placement and operation, improper maintenance, unauthorized repair, exposure to unreasonable temperatures or conditions. This includes damages caused by misusing essential oils or water treatment and cleaning solutions.
 - Damage resulting from inadequate packaging or carrier mishandling of returned products.
 - Misplacement or loss of accessories.
 - Shipping and transportation costs to and from any place of repair.
 - Direct, indirect special or consequential damages of any type, including loss of profits or other economic loss.
 - Transportation damage of a unit shipped from one of our retailers. Please contact them directly.
- This Warranty does not cover damages or defects caused by or resulting from failure to conform strictly to Coplax's specifications in connection with the installation, operation, use, maintenance, or repair of the Coplax appliance.

Specifications CIBUS Pet Feeder

Rated voltage	5 V d.c.
Rated power	5 W
Dimensions	W329 x D204 x H344mm
Weight	2.5 kg
Tank capacity	4.5 liter
Operating Temperature	0-40 C
EU Complies	CE / WEEE / RoHS

This device contains a radio module from Coplax AG type: WBR3. It operates in the ISM band in the range 2.400-2.4835GHz with a maximum transmitted power 20 dBm.

All rights for any technical modifications are reserved

繁體中文

恭喜！您剛剛購置了高品質的寵物餵食器—Styleis-CIBUS。它一定會給您帶來極大的樂趣。與所有家電一樣，這款產品也需要特別小心使用，以避免造成傷害、火災或損壞設備。請在首次使用該設備前仔細閱讀這些操作說明，並遵循設備上的安全提示。

安全重要指南

- 在首次使用該電器之前，請務必仔細閱讀使用說明，並妥善保存以備日後參考；如有需要，可將其轉交給下一任使用者。
- Coplax AG公司拒絕對因未遵循這些操作說明而導致的任何損失或損害承擔任何責任。
- 該電器僅限在家中用於本使用說明書中所描述的用途。未經授權使用及對電器進行技術改造可能會對生命和健康造成危險。
- 此設備可供8歲及以上兒童以及身體、感官或智力有障礙、缺乏經驗及知識的人群使用（前提是他們已接受關於如何安全使用該設備的指導並理解其中的潛在風險）。但此類人群不得自行操作或維護設備。兒童不得玩弄該設備。清潔和設備使用維護工作不得由未受監督的兒童進行。
- 公司保留對任何修改內容進行最終解釋的權力，恕不另行通知。
- 請根據您寵物的具體情況有選擇地使用此產品。
- 該產品運行電壓較低，但若寵物咬斷電源線可能會導致電流洩漏。請在專業指導下使用。
- 請妥善處理所有包裝材料。有些物品是用塑膠袋包裝的，可能會導致窒息。請將它們放置在兒童和寵物無法觸及的地方。
- 不要讓孩子們在寵物食槽內或其附近玩耍。
- 如果寵物無法夠到食物碗，或者存在任何身體殘疾情況，就不要使用這個餵食器。
- 請勿沖洗或浸泡主機及食物糧桶蓋。請用濕布擦拭乾淨。
- 切勿將產品放入洗碗機中進行清洗，但不銹鋼食物碗和糧桶除外。
- 清潔糧桶和食碗時，請勿使用熱水，如長時間不使用、移動本產品或清潔 產品時，請拔出插頭。
- 本產品只可以放置於乾燥的位置，請勿將設備放置於室外或者潮濕的地面，也不可讓產品接觸、浸入水中。
- 請勿將產品放置於雨雪暴露的環境中。
- 請勿用潮濕的手觸摸設備電源裝置。
- 請勿使用已損壞的電源線或插頭。
- 請將產品放置於遠離火源、熱源或者其他高溫的臺面。
- 請勿自行拆解、改造、維修本產品，否則會失去一切保修和服務權利。
- 請勿將任何異物放入寵物餵食器中。
- 請勿使用潮濕、罐裝或受潮的食物。
- 為了避免絆倒行人，請確保電源線位置遠離行人。

⚠ 注意：此款產品不具備防水功能。

設備描述

本設備由以下主要部件組成：

1. 電源適配器
2. 電源線_Type-C
3. 電源插口
4. 電池槽
5. 糧桶蓋及其打開方法
6. 乾燥劑
7. 糧桶
8. 狀態顯示燈
9. 不銹鋼糧碗
10. 塑膠糧盆
11. 控制面板
12. 主機
13. 出糧口
14. 開關按鍵
15. 設置按鍵
16. 手動餵食
17. 童鎖解除標示
18. 餵食份數顯示
19. 緊急乾電池電源標示
20. 刪減按鍵 (-)
21. 增加按鍵 (+)
22. 童鎖解除鍵
23. WiFi 連接
24. 預約餐數
25. 時間顯示
26. 葉輪裝置(食物分配裝置)
27. 出糧葉輪
28. 葉輪蓋
29. 葉輪蓋矽膠

供電方式

1. 交流電源供電運行

- 將UBS電源線的 Type-C 端插入底部的接口中，然後將 5V 電源適配器插入電源插座。機器會發出一聲蜂鳴聲，表示電源已連接好。

2. 乾電池供電運行

- 打開餵食器底部的電池蓋，安裝 3顆1號鹼性電池（由用戶自行購買），確保電池極性與電池槽內的標記相匹配。為避免突然斷電影響寵物進食，請不要將電池模式作為唯一的電源來源——此模式僅應在緊急餵食時使用。如果機器長時間不使用，請取出電池。
- 僅電池模式供電使用狀態下，暫不支持遠程操作餵食器。
- 插電使用時也可裝入乾電池做備用，斷電後會自動切換，設備正常運行。
- 在電池模式下，「**低食物量偵測**」與「**食物卡阻偵測**」僅在出料循環期間運作，而不會在其他時間啟動。請在此過程中若出現任何異常警報，務必及時處理。

使用說明

初次使用或日常使用，請遵守以下步驟：

1. 拇指與食指往中間按壓撥 動塊，提起糧桶蓋；
2. 打開乾燥盒蓋，放入乾燥劑，闔上乾燥盒蓋；（乾燥劑建議使用兩個月更換）
3. 添加寵物糧，注意請勿超 過MAX線，寵物糧顆粒大小 不大於15mm（約0.6inch）， 請勿添加濕糧；
4. 拇指與食指往中間按壓撥動塊，扣到糧桶上。
5. 不銹鋼食碗和糧盆扣合在一塊，再將其安裝到餵食器下方卡槽處。

⚠注意：移動餵食器前，請把糧 盆從卡槽處取出。提起餵食器時請手提住主機底部而不是

任何其它部位，防止掉落。

APP 操作指引

1. 安裝並下載“智能生活”App。參考以右圖圖示，可掃碼下載；
2. WiFi 配對設置
長按控制面板設置鍵 3 秒，聽到長響“滴”一聲，面板上 WiFi 燈閃爍代表正在聯網；
3. 在 APP 上添加設備
進入 APP，點擊右上角“+”，再點“添加設備”，打開手機 WiFi (2.4GHz) 和藍牙功能，搜索機器並按提示綁定設備；
4. 設置餵食計畫
綁定完成後，可在 APP 頁面設置出糧計畫。

▲ 注意:

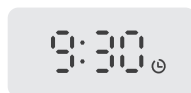
1. 首次聯網後，預計需要 3 分鐘更新控制面板的當前時間；
2. 用戶可在 APP 和控制面板上設置餵食計畫，餵食器會按照設置的計畫，每天自動出糧，也能及時推送消息，及時掌握情況；
3. 僅乾電池供電模式下，不支持遠程操作餵食器；
4. 需要重新匹配網路時，請長按設置鍵 3 秒，進入配網狀態。



按鍵操作指引

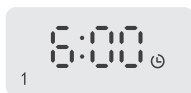
1. 設置當前時間:

長按童鎖鍵 3 秒，解除其他按鍵和螢幕，按下設置鍵，顯示當前時間的“小時”位閃爍，表示可修改當前時間的“時”，通過“+”和“-”按鍵選擇，確認後按下設置鍵保存並轉入第一餐下糧份數，顯示“P-01”，通過“+”和“-”按鍵選擇下糧份數，確認後按下設置鍵保存並轉入設置第二餐的下糧時間，如此類推。控制面板支持每天最多安排 6 餐；



2. 設置出糧時間和份數:

設置完當前時間後轉入第一餐的下糧時間，“小時”位閃爍，表示可修改第一餐下糧時間的“時”，通過“+”和“-”按鍵選擇，確認後按下設置鍵，轉為修改第一餐下糧時間的“分鐘”，通過“+”和“-”按鍵選擇，確認後按下設置鍵保存並轉入第一餐下糧份數，顯示“P-01”，通過“+”和“-”按鍵選擇下糧份數，確認後按下設置鍵保存並轉入設置第二餐的下糧時間，如此類推。控制面板支持每天最多安排 6 餐；



▲ 注意:

- ① 已設置的餵食計畫會在“餐數數字”顯示，如設置了 3 餐，顯示幕會顯示“1 2 3”。
- ② 前四餐的默認餵食時間為 6:00、12:00、18:00、00:00，默認份數為 1 份；第五餐和第六餐的默認餵食時間均為 01:00，默認份數為 0 份。
- ③ 如不打算按系統默認設定的時間餵食，可把份數設定為 0 份，機器在該時間不下糧，該餐數的餐數數字不顯示。

3. 手動餵食出糧:

在解鎖狀態下，按一次手動餵食按鍵，餵食器將分配 1 份糧食。最多可以手動餵食 25 份，

請注意寵物進食情況，防止糧食過多導致下糧口堵糧發生警報。

4. 清除所有餵食計畫:

在解鎖狀態下，長按“-”按鍵 3 秒，機器發出長響聲，重置所有餵食計畫，按默認餵食計畫下糧。

5. 調節狀態顯示燈亮度:

在解鎖狀態下，長按“+”按鍵 3 秒，機器發出長響聲，狀態顯示燈調暗，再長按“+”按鍵 3 秒，恢復原來亮度。

6. 重置 WiFi 網路:

在解鎖狀態下，長按“設置”按鍵 3 秒，機器發出長響聲，WiFi 連接燈變為閃爍，代表 WiFi 待連接狀態。



顯示燈狀態描述

1. 藍燈常亮:正在出糧;
2. 紅燈常亮:糧食不足，機器仍按時按量下糧，請及時添加食糧;
3. 紅燈慢閃:下糧口堵糧，機器不工作，需清理下糧口的糧食才可繼續下糧;
4. 紅燈快閃:葉輪卡糧，機器不工作，斷開電源，提起糧桶檢查葉輪內部的卡糧情況，清除後放入糧桶通電開機。

- ▲ 注意:乾電池供電使用時，檢測傳感器只在下糧過程中進行檢測。另外，如出現異常提醒燈提示，會在完成下糧後 2 分鐘熄滅異常提醒燈，節省耗電量。

故障排查表

故障描述	處理措施
狀態指示燈 紅燈常亮	①糧食不足，請添加糧食。機器仍可正常下糧。 ②若機器糧食足夠，仍然紅燈常亮，請檢查擺放位置是否在陽光直接照射的地方，會影響機器的檢測穩定，請把機器放在陰涼位置。
糧桶缺糧 紅燈不亮	清洗糧桶，確保糧桶乾淨無油脂
狀態指示燈 紅燈閃爍併發出響聲	①下糧口堵糧，請清理下糧口的糧食，確保下糧口通道沒有糧食，清理完成後會把剩餘未下糧的份數下糧。 ②檢查每餐下糧份數是否過多。
狀態指示燈 紅燈快閃併發出響聲	糧桶內卡糧，斷開電源，請按拆洗糧桶說明清理完重新裝回通電開機。
機器不出糧	①請確保糧桶內糧食乾燥，且食物直徑在 2-15mm / 約 0.07-0.6inch 之間。 ②首次使用，由於葉輪容腔內沒有填滿食物，可手動餵食 5-6 份後觀察是否正常下糧。 ③若機器使用乾電池模式供電，請檢查電池電量是否充足，可嘗試插上電源使用排查。 ④若機器使用電源模式供電，請檢查電源適配器是否原裝。
機器出糧時間有偏差	①請確認餵食計畫是否設置正確。 ②機器會存在兩分鐘左右的累積時間誤差，屬於正常現象。
機器出糧不準確	①不同糧食的顆粒大小會造成下糧數量偏差。 ②首次使用，由於葉輪容腔內沒有填滿食物，可手動餵食 5-6 份後觀察出糧。

乾電池燈閃爍	乾電池電量低，請更換乾電池。
機器無法連接上 WiFi	①請確保機器是否插好外接電源，並處於開機狀態。 ②請確保WiFi燈是否閃爍。 ③請確認WiFi支持2.4GHz頻段。 ④請確保機器與路由器距離不要太遠確保信號足夠。
WiFi 燈閃爍	機器處於配網狀態，請保持移動設備也處於匹配狀態
機器所有指示燈不亮	①檢查電源是否正常。 ②檢查充電線是否正常插入對應端口。 ③檢查是否未開機，按下“開關”按鍵。

清潔維護

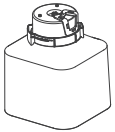
為了寵物的健康，建議定期清潔餵食器。清潔前，請把食碗和糧桶內的糧食清空。油性食物建議餵食完1桶糧食就清洗1次，非油性食物建議2-3桶清洗1次，保證寵物的用餐衛生。

清洗方式：

- 糧桶蓋和主機：僅可對產品表面進行擦拭清潔，請勿沖水清洗。
- 糧桶/食碗/糧盆：可沖水或浸泡清洗，水洗後請徹底風乾才重新安裝到機器上工作。

糧桶拆洗步驟：

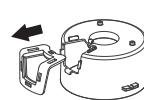
- 打開糧桶蓋，單獨拿出糧桶，倒置；



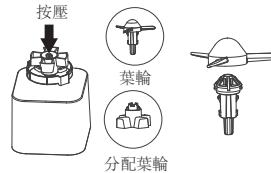
- 順時針旋轉並往上取出葉輪蓋；



- 拆下葉輪蓋矽膠；



- 用力按壓葉輪的彈簧軸到底部，聽到“嗒”一聲後，葉輪與出糧葉輪鬆脫，拿出葉輪和出糧葉輪；把葉輪頂部的矽膠頭拔掉，拆除；
- 獲得糧桶、葉輪蓋、葉輪蓋矽膠、出糧葉輪、葉輪矽膠頭、葉輪塑膠支架，均可水洗。（不銹鋼食碗和糧盆也可水洗）。



維修/處理

- 所有電子設備的維修（包括更換電源線）只能由授權技術人員進行。進行不當維修將導致保修失效，且我們不承擔任何責任。
- 如果電源線出現損壞，必須由製造商、官方服務合作夥伴或具備資質的人員進行更換，以避免出現更嚴重的損壞情況。
- 如果電纜或插頭出現損壞、設備發生故障、設備掉落或以任何其他方式受損（例如外殼有裂縫或破損），則切勿使用該設備。
- 切勿使用任何鋒利、粗糙的物體或腐蝕性化學物質。
- 任何舊設備都必須立即停止使用（拔掉電源線），並被送到相應的廢棄物收集點。
- 此設備不得與生活垃圾一同處理。請將此設備送到指定的垃圾收集點進行處理。對電氣和電子廢棄物的收集與回收能夠節約寶貴的資源。
- 這種包裝材料是可回收的。請以環保的方式處理包裝，並確保將其送到可回收材料的收集中心。
- 如果電氣設備未按照規定的方式進行處理，其自然風化過程可能會導致有害物質污染地下水和食物鏈，還可能給動植物帶來長期的危害。



兩年保修

在購買電器後的2年質保期內，我們將免費為您維修或更換為翻新產品（由我們決定），無論零件或人工費用方面，對於任何因材料或工藝問題而出現故障的機器或部件均不收取任何費用。但上述質保條款除外。Coplax AG公司免除上述條款之外的所有明示保證以及關於該產品在質保期結束後任何期間內的適用性或特定用途的保證。Coplax AG公司將根據其自身決定對符合質保條件的產品進行維修或更換。不會給予任何退款。上述所述的補救措施是您在上述質保條款被違反的情況下所擁有的唯一補救措施。

涵蓋範圍

私人擁有Stylies設備的原始所有者，如果原設備所有者能夠提供一份日期明確的購買證明（例如發票或收據），則該證明所涵蓋的保修服務將有效。保修權不可轉讓。在退回設備之前，請提供一份日期明確的購買證明（需以傳真、電子郵件或郵寄的方式發送），同時附上設備的型號以及關於該設備問題的詳細描述（最好以打印形式提供）。將描述內容裝入信封，並直接將其貼在設備上，然後再將信封封好。請勿在原包裝盒上做任何標注或對其進行任何修改。

本保修不涵蓋以下內容：

通常需要更換的部件，例如“乾燥劑除濕劑”、“濾芯”以及任何需要定期更換的消耗性物品（但不包括材料或工藝缺陷）

- 由於日常磨損（包括濫用、誤用、疏忽、事故、安裝不當、放置不當、操作不當、維護不當、未經授權的維修、暴露於不合理溫度或環境條件）而造成的損壞、故障、損失或變質。這還包括因不當使用精油或水處理及清潔溶液而導致的損壞。
- 因產品包裝不當或運輸過程中操作失誤而導致的損失。
- 配件放置不當或丟失。
- 往返任何維修地點的運輸及倉儲費用。
- 直接、間接的特殊或附帶損害賠償，包括利潤損失或其他經濟損失。
- 從我們某一家零售商處發貨的設備在運輸過程中受損。請直接聯系該零售商。本保修條款不涵蓋因未能嚴格遵循Coplax設備的安裝、操作、使用、維護或維修過程中造成的損壞或缺陷。

規格參數: CIBUS 寵物餵食器

額定電壓/電流	5 V d.c.
額定功率	5 W
產品尺寸	W329 x D204 x H344mm
產品淨重	2.5 kg
糧桶容量	4.5 liter
工作溫度	0-40°C
執行標準	CE / WEEE / RoHS

該設備配備了來自Coplax AG公司的無線電模組，型號為WBR3。其工作頻段為ISM頻段，頻率範圍在2.400 - 2.4835GHz之間，最大發射功率為20dBm。

任何技術改進方面的所有權利均予以保留。